

Infinity Specification

| STANDARD INCLUSIONS |
|---|
| Home Owners Indemnity insurance |
| H.I.A. fixed Building Contract |
| 7 Star compliant home* |
| 30-year structural guarantee |
| Re-Peg to site (to new subdivisions) |
| Contour survey completed on your block |
| Building Permit and Water Corporation application fees included |
| Termite treatment and certificate |
| R4.0 ceiling insulation to home including Garage |
| Double clay brick construction |
| Painted sand finish render to Front Elevation (where applicable, as per plan) |
| 2 course Blueprint Homes range external face bricks to sides and rear of home (where applicable, as per plan) |
| Rolled brick joints in cream mortar |
| Your choice of Builder's Infinity specification COLORBOND® metal roof range |
| COLORBOND® fascia, downpipes and gutters |
| 25° roof pitch as standard |
| H2 treated roof timbers |
| Quality Dowell powder-coated aluminium sliding glass doors |
| Quality Dowell powder-coated aluminium breeze lock windows |
| Flyscreens to all aluminium opening windows and sliding doors |
| Metal corner plaster beads to all internal trafficable corners (excludes sliding door, window and front door reveals) |
| European inspired mixers throughout |
| Shelf and rail to all Bedroom robes (where applicable, as per plan) |
| Painting specification includes: ceilings and cornice, doors and door frames, eaves, woodwork and meterbox |
| Future connect pack including TV, phone and internet point |
| Double power points throughout excluding Garage and appliance locations |
| 3 external, 1 Garage ceiling and ample internal light points |
| Hard wired smoke detectors |
| 2 safety switches |
| 2 external garden taps |
| 6 Star 26L continuous flow gas hot water unit |
| Garage, concrete hardstand and Builder's Infinity specification COLORBOND® auto sectional door with flush fit pelmet and track system and 3 controllers (as per plan) |
| Up to 6m long full width paved Driveway, Verandah/Porch, Alfresco and 1m wide path (from Builder's 60mm Infinity specification) (with exception of rear Garage designs which include a 2m long Driveway as standard) (where applicable) |
| Painted MDF cornice to Garage with 28c high hardiflex ceiling |
| Feature Front Entry door with electronic smart lock handle |
| Solid flush door panel to Garage entry |
| Quality Gainsborough door handle entrance set and double deadlock to Garage entry door |
| Quality Gainsborough internal door handles |

| KITCHEN INCLUSIONS |
|--|
| 20mm stone benchtops from Infinity Kitchen specification |
| Diamond White Gloss or Diamond White Gloss/Portland Ash doors, drawer fronts, fixed panels to island bench and all exposed edges |
| Infinity Kitchen specification handles |
| Pull-out double bin |
| Double sized Blum cutlery tray |
| Wall tiling up to underside of overhead cupboards from Builder's Infinity specification |
| Laminated Pantry with four shelves |
| Microwave recess with single power point |
| Pot drawers |
| Overhead cupboards |
| 2650mm long x 1200mm wide island bench or 2650mm long x 1200mm wide island bench with waterfall ends (where applicable, as per plan) |
| Soft closing doors and drawers |
| Infinity specification Kitchen sink – 1¼ bowl above mount stainless steel sink with single drainer and basket wastes or handmade undermount double bowl stainless steel sink and basket wastes with European inspired sink mixer (where applicable, as per plan) |
| Dishwasher provision with cold tap and single power point |
| Westinghouse 900mm stainless steel freestanding stove to Kitchen (electric oven and gas hotplate) or 2 x Electrolux 600mm ovens and 900mm Electrolux hotplate (where applicable, as per plan) |
| Electrolux 800mm stainless steel concealed rangehood to Kitchen |

| SCULLERY INCLUSIONS (WHERE APPLICABLE) |
|---|
| 20mm stone benchtops from Infinity Scullery specification |
| Diamond White Gloss doors and all exposed edges including overhead cupboards (where applicable, as per plan) |
| Infinity Scullery specification handles |
| Infinity specification Scullery sink – 32L above mount stainless steel sink and European inspired Kitchen Mixer (where applicable, as per plan) |
| Wall tiling up to underside of overhead cupboards from Builder's Infinity specification |
| Soft closing doors |

| LAUNDRY AND BATHROOMS |
|--|
| 20mm stone benchtops from Infinity specification to Bathroom and Ensuite |
| Diamond White Gloss, Portland Ash or Oakwood doors and all exposed edges to Bathroom and Ensuite |
| 20mm Cotton White stone benchtop and Diamond White Gloss doors and all exposed edges to Laundry |
| 2m high tiling from Builder's Infinity specification to Bathroom and Ensuite shower recess (where applicable, as per plan) |
| Floor tiling from Builder's Infinity specification to Bathroom, Ensuite, WC and Laundry |
| Semi frameless clear glazed shower screen and pivot door to Bathroom and Ensuite |
| Framed mirrors (full width of the vanity) to Bathroom and Ensuite |
| European inspired gooseneck with round or square shower rose to Bathroom and Ensuite |
| European inspired above mount china basins to Bathroom and Ensuite |
| European inspired rimless dual flush china toilet suite with 4 star rating and soft close seat |
| European inspired 45ltr stainless steel trough |
| European inspired chrome double towel rails and toilet roll holders |
| Automatic washing machine taps |
| Flumed exhaust fan to WC areas |
| Chrome plated floor wastes |
| Linen recess with 4 white lined shelves (where applicable, as per plan) |
| 1500mm long bath to Bathroom (where applicable, as per plan) |
| Soft closing doors and drawers (drawers where applicable, as per plan) |

| ADDITIONAL BUILT-IN VALUE |
|---|
| 31c high ceilings to Front Entry Passage, Kitchen, Meals and Family |
| Fully ducted reverse cycle air conditioning |
| Vertical blinds throughout internally (excluding obscure glazed wet areas) from Builder's Infinity specification |
| LED lighting throughout internally from Builder's Infinity specification |
| 450mm x 450mm floor tiles to Entry and Main Living area from Builder's Infinity specification |
| Luxurious loop pile carpet and underlay to all Bedrooms including robes and Audio Visual from Builder's Infinity specification (where applicable) |
| Mirrored sliders to all minor Bedroom robes (where applicable, as per plan) |

BLUEPRINT HOMES (WA) PTY LTD

11 Delawney Street, Balcatta WA 6021
PO Box 772, Balcatta WA 6914
6241 4888
blueprinthomes.com.au

Disclaimer: This information is correct at time of printing 1st May 2025. Images for illustration purposes only. All details are to be confirmed during your consultation with your Blueprint representative and your final plans and addenda will represent what you have purchased. BP0033_BRN11904



Infinity Farm Beach Farmhouse



“Everything is included at a price you can afford, so relax”

Scotty

It's *better* building with Blueprint

9440 1800
blueprinthomes.com.au

*7 Star compliance based on the highest-rated orientation and is subject to the Owner's land & design amendments. This excludes the Bickley Valley zone.

Big Value Inclusions



Gourmet Kitchen



Reverse Cycle Air Con



High Ceilings



Scullery



Led Lighting Internally



Smart Lock Door



Blinds



Porcelain Glazed Tiles



Loop Pile Carpet



Stone Benchtops Throughout

Plus European inspired inclusions.



Kitchen Sink Mixer



Round or Square Shower Roses



Above Mount China Vanity Basin



China Toilet Suite with Soft Close Seat

Infinity Farm Beach



4



2



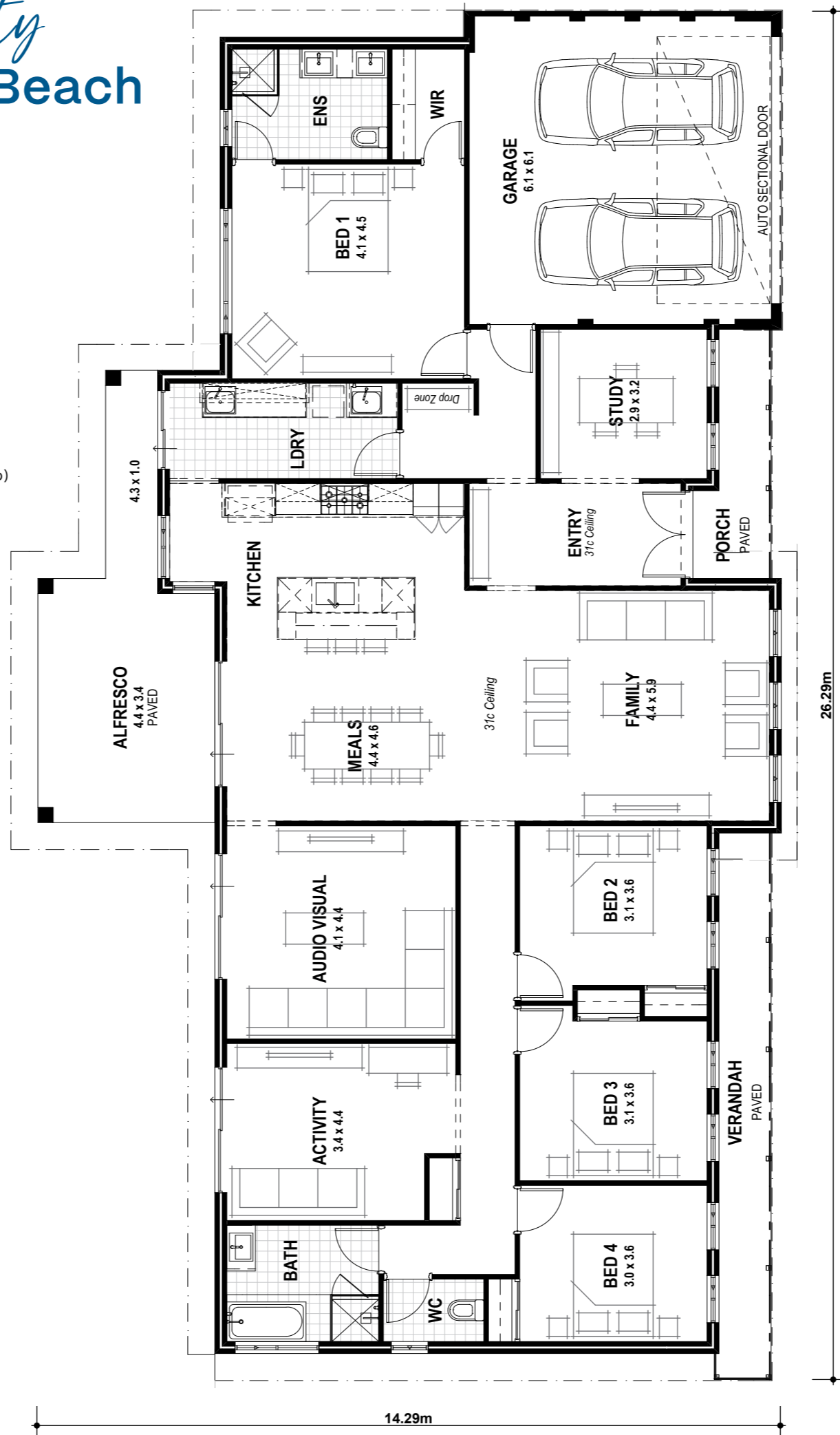
2

VITAL STATS

Living area 247m²
(including Alfresco)

Total area 300m²
(excluding eaves)

Scale 1:100



Farm Beach Included



Farm Beach Premium

AND OUR FUTURE CONNECT PACK

