

Lifestyle Range

Crimson Included



Crimson Elevation



Lifestyle Kitchen



Lifestyle Bathroom / Ensuite

Crimson Options



Contemporary Elevation



Urban Elevation



Coastal Elevation



Luxury Kitchen



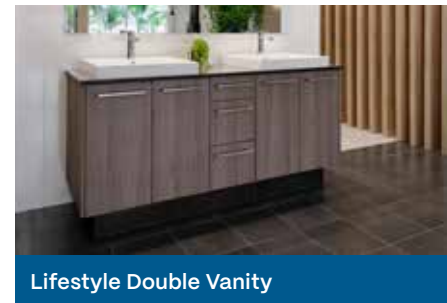
Contemporary Kitchen



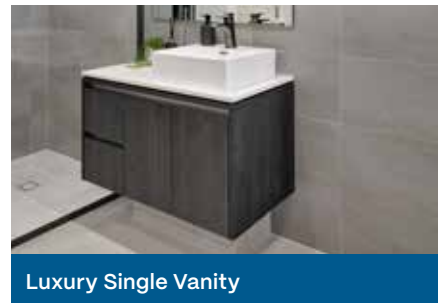
Luxury Scullery



Luxury Laundry



Lifestyle Double Vanity



Luxury Single Vanity

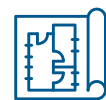
Each home includes *inspired* features



NaHERS 7-star energy rated designs



Beautiful stone benchtops



Plus more features for your home

The Crimson

4

2

2

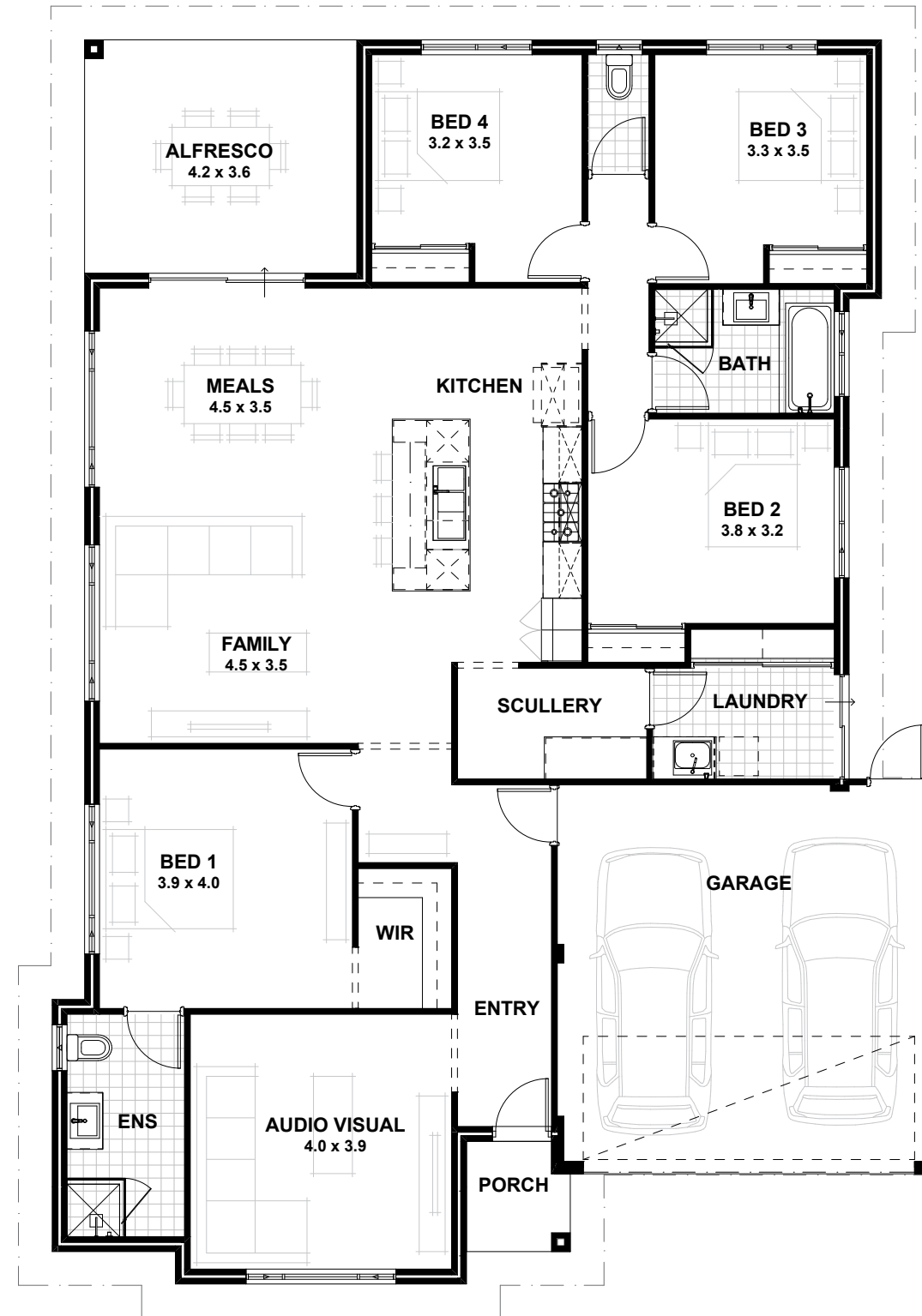
VITAL STATS

House width 13.79m
House length 19.19m

Living area 192m²
(including Alfresco)

Total area 231m²
(excluding eaves)

Scale 1:100



Crimson Contemporary



Crimson Urban



Crimson Coastal

Lifestyle Range Specifications

STANDARD INCLUSIONS

Home Owners Indemnity Insurance
 H.I.A fixed Building Contact
 7 Star compliant home*
 30 year structural guarantee
 Re-peg to site (new subdivisions)
 Contour survey completed on your block
 Building Permit and Water Corporation application fees included
 Termite treatment and certificate
 R4.0 ceiling insulation to home including Garage (excluding Porch/Portico/Alfresco)
 Double clay brick construction
 Plasterboard Drywall Masonry system to all internal walls including moisture-resistant plasterboard to wet areas as required
 Cavity wall insulation included to external cavity walls as required to meet 7 Star
 2 course Blueprint Homes range external face bricks
 Rolled brick joints in cream mortar
 Your choice of Blueprint Homes standard COLORBOND® metal roof range
 COLORBOND® slotted gutters, fascias & downpipes
 H2 treated roof timbers
 28c high ceilings with painted cove cornice internally throughout
 25c high hardiflex lined ceiling to Garage
 Aluminium single lite (glazed) Front Entry door with electronic smart lock handle
 Low-E clear glazing to windows and sliding doors excluding wet areas as required to meet 7 Star
 Quality Dowell powder-coated aluminium sliding doors
 Quality Dowell powder-coated aluminium breeze lock windows
 Flyscreens to all aluminium opening windows and sliding doors
 Shelf and rail to Bedroom robes (where applicable, as per plan)
 Linen recess with 4 white lined shelves (where applicable, as per plan)
 Painting specification includes ceilings and cornice, doors and door frames, eaves, woodwork and meterbox
 LED lighting throughout internally from Builder's Lifestyle specification
 Future connect pack including TV, phone and data point
 Double power points throughout excluding Garage and appliance locations
 3 external, 1 Garage ceiling and ample internal light points
 Hard wired smoke detectors & 2 safety switches
 2 external garden taps
 6 Star 26L gas continuous flow hot water system
 Double Garage, 25c high hardiflex ceiling, concrete hardstand and Blueprint Homes range COLORBOND® auto sectional door with flush fit pelmet and track system and 3 controllers
 Up to 6m long full width paved Driveway, Porch/Portico, Alfresco and 1m wide path from Blueprint Homes 60mm Lifestyle range (except for rear Garage designs which include a 2m long driveway as standard)
 Solidcore flush panel door to Garage & Fibreglass flush panel door to Rear Garage (where applicable, as per plan)
 Quality Gainsborough entrance set and double deadlock to Garage door & Gainsborough entrance set to Rear Garage door (where applicable, as per plan)
 Quality Gainsborough internal lever door handles
 Mirrored or Vinyl sliders to all minor Bedroom robes & Laundry linen (where applicable, as per plan)

KITCHEN INCLUSIONS

20mm stone benchtops from Lifestyle Kitchen specification
 Diamond White Gloss or Diamond White Gloss/Portland Ash doors, drawer fronts, fixed panels to island bench and all exposed edges
 2650mm long x 1200mm wide island bench
 Lifestyle Kitchen specification handles
 Pull-out double bin
 Double sized Blum outlery tray
 Wall tiling up to underside of overhead cupboards from Builder's Lifestyle range
 Laminated Pantry with four shelves
 Microwave recess with single power point
 Pot drawers
 Overhead cupboards
 Soft closing doors and drawers
 Lifestyle specification Kitchen sink – handmade 1¼ bowl above-mount stainless steel sink with single drainer and basket wastes or handmade undermount double bowl stainless steel sink and basket wastes with European inspired sink mixer
 Dishwasher provision with cold tap and single power point
 Westinghouse 900mm stainless steel freestanding stove (electric oven and gas hotplate)
 Electrolux 860mm stainless steel concealed rangehood

SCULLERY INCLUSIONS (WHERE APPLICABLE, AS PER PLAN)

20mm stone benchtops from Lifestyle Scullery specification
 Diamond White Gloss doors, fixed panels and all exposed edges
 Lifestyle Scullery specification handles
 Wall tiles from Builder's Lifestyle range
 Soft closing doors

LAUNDRY, ENSUITE & BATHROOM INCLUSIONS

20mm stone benchtops from Lifestyle specification to Bathroom and Ensuite
 Diamond White Gloss, Portland Ash or Teakwood doors, fixed panels and all exposed edges to Bathroom and Ensuite
 20mm Cotton White stone benchtop and Diamond White Gloss doors, fixed panels and all exposed edges to Laundry
 Soft closing doors and drawers (drawers where applicable, as per plan)
 2m high tiling from Builder's Lifestyle range to Bathroom and Ensuite shower recess
 Floor tiling from Builder's Lifestyle specification to Bathroom, Ensuite, WC and Laundry
 Semi frameless clear glazed shower screen and pivot door to Bathroom and Ensuite
 Frameless mirrors (full width of the vanity) to Bathroom and Ensuite
 European inspired mixers throughout
 European inspired gooseneck with round or square shower rose to Bathroom and Ensuite
 European inspired above mount china basins to Bathroom and Ensuite
 European inspired rimless dual flush china toilet suite with 4-star rating and soft close seat
 European inspired 45lt stainless steel trough
 European inspired chrome double towel rails and toilet roll holders
 Automatic washing machine taps
 Flumed exhaust fan to WC areas
 Chrome plated floor wastes
 1700mm inset bath to Bathroom (where applicable, as per plan)



BLUEPRINT HOMES (WA) PTY LTD

11 Delawney Street, Balcatta WA 6021
 PO Box 772, Balcatta WA 6914
 6241 4888

blueprinthomes.com.au

MOST AWARDED BUILDER FOR CUSTOMER SERVICE **EVER!**

blueprint
HOMES

MA
MASTER
BUILDERS
WESTERN AUSTRALIA

Disclaimer: This information is accurate at time of printing 1st April 2026. All details are to be confirmed during your consultation with your Blueprint representative and your final plans and addenda will represent what you have purchased. Images for illustration purposes only. BP0131_BRN11904

The Crimson



*7 Star compliance based on the highest-rated orientation and is subject to the Owner's land & design amendments. This excludes the Bickey Valley zone.

Roof, downpipes and guttering made from genuine COLORBOND® steel.

Colorbond®

blueprint
HOMES
Since 2005

9440 1800
blueprinthomes.com.au

It's *better* building
with Blueprint