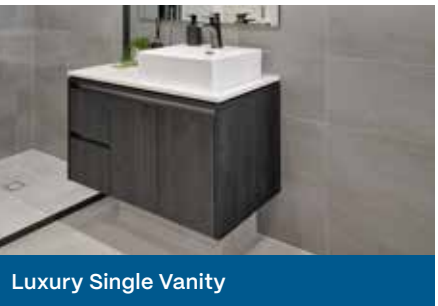
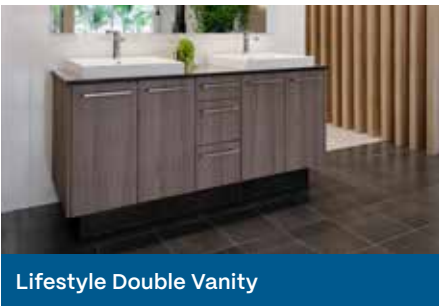
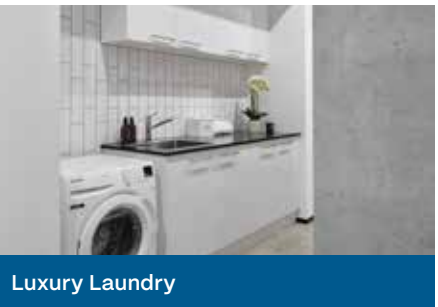


Lifestyle Range

Indigo Included



Indigo Options



Each home includes *inspired* features

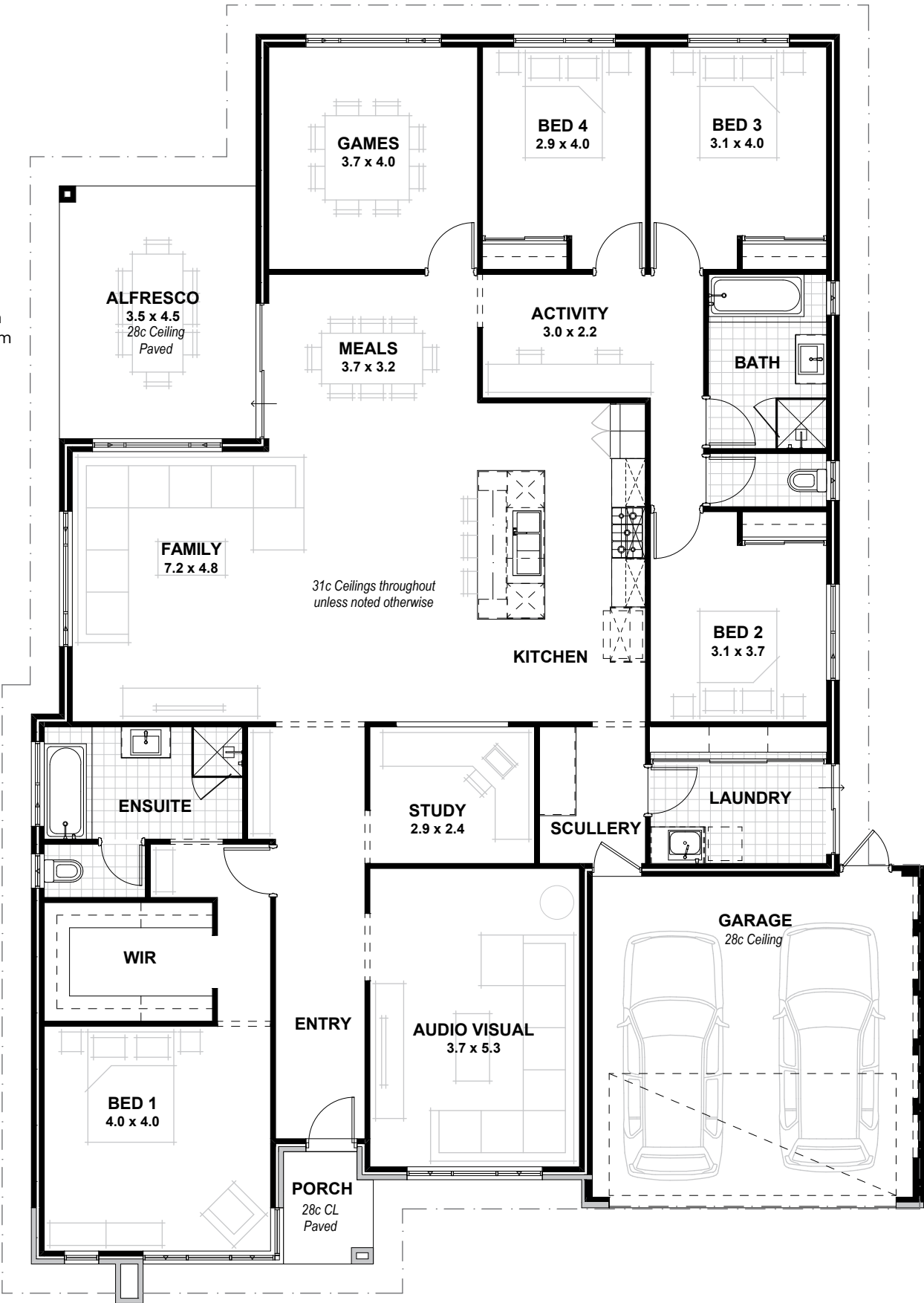
- NaTHERS 7-star energy rated designs
- 31 course high internal ceilings
- Beautiful stone benchtops
- Plus more features for your home

The Indigo

- 4
- 2
- 2

VITAL STATS

House width 15.89m
House length 22.59m
Living area 260m² (including Alfresco)
Total area 298m² (excluding eaves)
Scale 1:100



Indigo Contemporary (Included)



Indigo Urban



Indigo Coastal

Lifestyle Range Specifications

STANDARD INCLUSIONS
Home Owners Indemnity insurance
H.I.A fixed Building Contact
7 Star compliant home*
30 year structural guarantee
Re-peg to site (new subdivisions)
Contour survey completed on your block
Building Permit and Water Corporation application fees included
Termite treatment and certificate
R4.0 ceiling insulation to home including Garage (excluding Porch/Portico/Alfresco)
Double clay brick construction
2 course Blueprint Homes range external face bricks
Rolled brick joints in cream mortar
Your choice of Blueprint Homes standard COLORBOND® metal roof range
COLORBOND® slotted gutters, fascias & downpipes
25° roof pitch with H2 treated roof timbers
Quality Dowell powder-coated aluminium sliding doors
Quality Dowell powder-coated aluminium breeze lock windows
Flyscreens to all aluminium opening windows and sliding doors
Metal corner plaster beads to all internal trafficable corners (excludes sliding door, window and front door reveals)
Shelf and rail to Bedroom robes (where applicable, as per plan)
Linen recess with 4 white lined shelves (where applicable, as per plan)
Painting specification includes ceilings and cornice, doors and door frames, eaves, woodwork and meterbox
Future connect pack including TV, phone and data point
Double power points throughout excluding Garage and appliance locations
3 external, 1 Garage ceiling and ample internal light points
Hard wired smoke detectors & 2 safety switches
2 external garden taps
250L heat pump hot water system
Double Garage with concrete hardstand and Blueprint Homes range COLORBOND® auto sectional door with flush fit pelmet and track system and 3 controllers
Up to 6m long full width paved Driveway, Porch/Portico, Alfresco and 1m wide path from Blueprint Homes 60mm Lifestyle range (except for rear Garage designs which include a 2m long driveway as standard)
Solidcore flush panel door to Garage & Fibreglass flush panel door to Rear Garage (where applicable, as per plan)
Quality Gainsborough entrance set and double deadlock to Garage door & Gainsborough entrance set to Rear Garage door (where applicable, as per plan)
Quality Gainsborough internal lever door handles

KITCHEN INCLUSIONS
20mm stone benchtops from Lifestyle Kitchen specification
Diamond White Gloss or Diamond White Gloss/Portland Ash doors, drawer fronts, fixed panels to island bench and all exposed edges
2650mm long x 1200mm wide island bench
Lifestyle Kitchen specification handles
Pull-out double bin
Double sized Blum cutlery tray
Wall tiling up to underside of overhead cupboards from Builder's Lifestyle range
Laminated Pantry with four shelves
Microwave recess with single power point
Pot drawers
Overhead cupboards
Soft closing doors and drawers
Lifestyle specification Kitchen sink – handmade 1¼ bowl above-mount stainless steel sink with single drainer and basket wastes or handmade undermount double bowl stainless steel sink and basket wastes with European inspired sink mixer
Dishwasher provision with cold tap and single power point
Westinghouse 900mm stainless steel freestanding stove (electric oven and gas hotplate)
Electrolux 860mm stainless steel concealed rangehood

*7 Star compliance excludes the Bickley Valley climate zone and is subject to the Owner's land & design amendments.

SCULLERY INCLUSIONS (WHERE APPLICABLE, AS PER PLAN)
20mm stone benchtops from Lifestyle Scullery specification
Diamond White Gloss doors, fixed panels and all exposed edges
Lifestyle Scullery specification handles
Wall tiles from Builder's Lifestyle range
Soft closing doors

LAUNDRY, ENSUITE & BATHROOM INCLUSIONS
20mm stone benchtops from Lifestyle specification to Bathroom and Ensuite
Diamond White Gloss, Portland Ash or Teakwood doors, fixed panels and all exposed edges to Bathroom and Ensuite
20mm Cotton White stone benchtop and Diamond White Gloss doors, fixed panels and all exposed edges to Laundry
Soft closing doors and drawers (drawers where applicable, as per plan)
2m high tiling from Builder's Lifestyle range to Bathroom and Ensuite shower recess
Floor tiling from Builder's Lifestyle specification to Bathroom, Ensuite, WC and Laundry
Semi frameless clear glazed shower screen and pivot door to Bathroom and Ensuite
Frameless mirrors (full width of the vanity) to Bathroom and Ensuite
European inspired mixers throughout
European inspired gooseneck with round or square shower rose to Bathroom and Ensuite
European inspired above mount china basins to Bathroom and Ensuite
European inspired rimless dual flush china toilet suite with 4-star rating and soft close seat
European inspired 45lit stainless steel trough
European inspired chrome double towel rails and toilet roll holders
Automatic washing machine taps
Flumed exhaust fan to WC areas
Chrome plated floor wastes
1700mm inset bath to Bathroom (where applicable, as per plan)

ADDITIONAL BUILT-IN VALUE
Feature Front Elevation including acrylic render
Aluminium single lite (glazed) Front Entry door with electronic smart lock handle
31c high ceilings with painted cove cornice internally throughout
28c high hardiflex ceiling with painted MDF cornice to Garage
LED lighting throughout internally from Builder's Lifestyle specification
6mm EnergyTech clear glazing to all windows & sliding doors excluding wet areas
Cavity wall insulation included to external cavity walls
Hobless showers to Bathroom & Ensuite
Mitred tiled edges throughout
Mirrored or Vinyl sliders to all minor Bedroom robes & Laundry linen (where applicable, as per plan)



BLUEPRINT HOMES (WA) PTY LTD

11 Delawney Street, Balcatta WA 6021
PO Box 772, Balcatta WA 6914
6241 4888
blueprinthomes.com.au

MOST AWARDED BUILDER
FOR CUSTOMER SERVICE

EVER!

Disclaimer: This information is accurate at time of printing 1st March 2025. All details are to be confirmed during your consultation with your Blueprint representative and your final plans and addenda will represent what you have purchased. Images for illustration purposes only. 03/2025_BP0001_BRN11904



9440 1800
blueprinthomes.com.au

It's *better* building
with Blueprint

Roof, downpipes and guttering made from genuine COLORBOND® steel.