



## BLUEPRINT HOMES (WA) PTY LTD

11 Delawney Street, Balcatta WA 6021  
PO Box 772, Balcatta WA 6914  
6241 4888  
[blueprinthomes.com.au](http://blueprinthomes.com.au)

MOST AWARDED BUILDER  
FOR CUSTOMER SERVICE **EVER!**



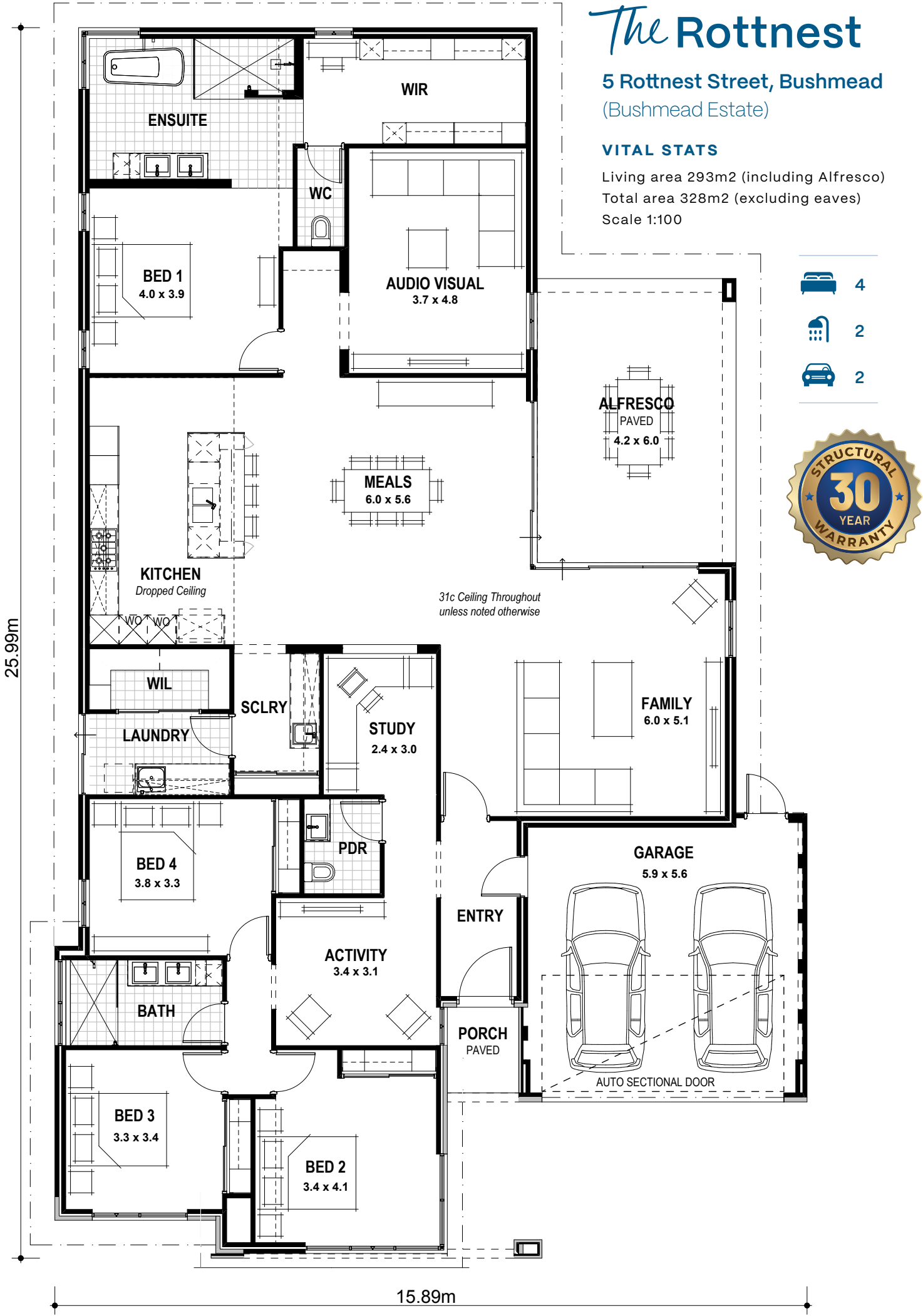
Disclaimer: This information is correct at time of printing 27th January 2026. All details are to be confirmed during your consultation with your Blueprint representative and your final plans and addenda will represent what you have purchased. BP0113

# The Pottnest



9440 1800  
[blueprinthomes.com.au](http://blueprinthomes.com.au)

It's *better* building  
with **Blueprint**



# Lifestyle Luxe Specification (as displayed)

| STANDARD INCLUSIONS   | KITCHEN & SCULLERY (IF APPLICABLE)  |
|---|---|
| Home Owners Indemnity insurance   | 20mm stone benchtops from Builders Luxury specification   |
| H.I.A. fixed Building Contract  | Crystal White Matt, Diamond White Gloss or Diamond White Gloss/Portland Ash doors, drawer fronts and all exposed edges to Kitchen and Crystal White Matt or Diamond White Gloss to Scullery |
| 7 Star compliant home*  | Builders Lifestyle Luxe specification handles to Kitchen & bar style handles to Scullery  |
| 30 year structural guarantee  | Pull-out double bin to Kitchen  |
| Re-Peg to site (to new subdivisions)  | Double sized Blum® cutlery tray to Kitchen  |
| Contour survey completed on your block  | Laminated Pantry with four shelves to Kitchen   |
| Building Permit and Water Corporation application fees included   | Microwave recess with single power point to Kitchen   |
| Termite treatment and certificate   | Pot drawers to Kitchen  |
| Double clay brick construction  | Overhead cupboards to Kitchen & Scullery  |
| Plasterboard Drywall Masonry system to all internal walls including moisture-resistant plasterboard to wet areas as required  | 2650mm long x 1200mm wide island bench with waterfall ends to Kitchen   |
| 2 course Blueprint Homes range external face bricks   | Soft closing doors and drawers to Kitchen & Scullery  |
| Rolled brick joints in cream mortar   | Two Electrolux 600mm dark stainless steel ovens to Kitchen  |
| Your choice of Blueprint Homes standard COLORBOND® metal roof range   | Electrolux 900mm black ceramic glass hotplate to Kitchen  |
| COLORBOND® fascia, downpipes and slotted gutters  | Electrolux 800mm stainless steel concealed rangehood to Kitchen   |
| H2 treated roof timbers   | European inspired double bowl undermount stainless steel sink to Kitchen & single bowl above mount stainless steel sink to Scullery   |
| R4.0 ceiling insulation to home including Garage (excluding Porch/Portico/Alfresco)   | Choice of Chrome, Chrome/Black flexible hose, Brushed Gunmetal or Brushed Nickel sink mixers to Kitchen & Scullery  |
| Full cavity wall insulation included  | Builders Lifestyle Luxe range splashback to Kitchen and Scullery  |
| Low-E clear glazing to windows and sliding doors excluding wet areas as required to meet 7 Star   |   |
| Quality Dowell powder-coated aluminium sliding glass doors  |   |
| Quality Dowell powder-coated aluminium breeze lock windows  |   |
| Flyscreens to all aluminium opening windows and sliding doors   |   |
| Painting specification includes ceilings and cornice, doors and door frames, eaves, woodwork and meterbox   |   |
| Feature Front Elevation including acrylic render  |   |
| Double Garage with 31c high plasterboard ceiling and concrete hardstand   |   |
| Blueprint Homes Lifestyle Luxe range COLORBOND® or FLEXOGRAPHIC auto sectional door with 3 controllers to Garage  |   |
| Up to 6m long full width paved Driveway, Porch/Portico, Alfresco and 1m wide path from Blueprint Homes 60mm Lifestyle Luxe range (with exception of rear Garage designs which include a 2m long Driveway as standard) |   |
| 31c high plasterboard ceilings internally throughout  |   |
| Feature dropped ceilings and/or bulkheads   |   |
| 10mm plasterboard ceiling to external ceilings Porch/Portico  |   |
| 10mm plasterboard 3c recessed ceiling to Alfresco   |   |
| 75mm Cove cornice throughout internally & externally including Garage/Porch/Portico   |   |
| 10mm wet area board lining to all wet area walls  |   |
| 10mm plasterboard lining to all remaining internal walls (excluding Garage)   |   |
| 28c high feature aluminium single lite (clear glazed) front door & frame with electronic smart lock handle  |   |
| 28c high aluminium feature sliding doors  |   |
| 28c high head to all aluminium windows (if applicable)  |   |
| 2340mm high solidcore flush panel door and frame to Garage & 2340mm high Fibreglass flush panel door and frame to Rear Garage   |   |
| Gainsborough Lifestyle Luxe range door hardware to Garage and Rear Garage doors   |   |
| 2340mm high feature single lite (glazed) door and JDS Modular metal door frame internally   |   |
| 2340mm high hollowcore flush panel doors and JDS Modular metal door frames elsewhere internally   |   |
| Gainsborough Lifestyle Luxe range lever door handles to internal doors  |   |
| Choice of framed vinyl/mirrored/Supa Whitekote sliders to Bedroom Robes and Linen   |   |
| Blueprint Homes built-in shelving system (colour: Slate Grey) to Master Suite walk-in robe  |   |
| Blueprint Homes built-in shelving system (colour: Slate Grey) to Bedroom Robes  |   |
| Built-in Linen with 4 white lined shelves   |   |
| Future connect pack including TV, phone and internet point  |   |
| LED lighting throughout internally from Builder's Lifestyle Luxe specification  |   |
| Double power points throughout excluding Garage and appliance locations   |   |
| 3 external, 1 Garage ceiling and ample internal light points  |   |
| Blueprint Homes Lifestyle Luxe range Legrand Arteor light switches and power points   |   |
| Flumed exhaust fan to Ensuite, Ensuite WC, Bathroom and Main WC/Powder Room   |   |
| Hard wired smoke detectors  |   |
| 2 safety switches   |   |
| Lock and viewing panels to both meter boxes   |   |
| Dishwasher provision with cold tap and single power point   |   |
| Automatic washing machine taps  |   |
| 6 Star 26L continuous flow gas hot water unit   |   |
| 2 external garden taps  |   |

| LAUNDRY, ENSUITE, BATHROOM & POWDER ROOM (IF APPLICABLE)   |
|--|
| 20mm stone benchtops from Builders Lifestyle Luxe specification to wet areas   |
| Crystal White Matt or Diamond White Gloss doors and all exposed edges to Laundry   |
| Diamond White Gloss, Portland Ash or Teakwood doors, drawer fronts and all exposed edges to Ensuite, Bathroom & Powder Room                          |
| Builders Lifestyle Luxe specification bar style handles to Laundry   |
| Builders Lifestyle Luxe specification aluminium finger grip handles to Ensuite, Bathroom & Powder Room   |
| Soft closing doors and drawers   |
| Builders Lifestyle Luxe range wall and floor tiles to Laundry, Ensuite, Ensuite WC, Bathroom and Main WC/Powder Room                                 |
| Tiled niches/ledges to Ensuite & Bathroom  |
| Semi Frameless clear glazed shower screen and pivot door to Ensuite/Bathroom   |
| Slimline frame mirrors to Ensuite, Bathroom & Powder Room  |
| European inspired 45ltr stainless steel trough to Laundry  |
| European inspired above counter china basins to Ensuite, Bathroom & Powder Room  |
| Choice of Chrome, Brushed Gunmetal or Brushed Nickel European inspired shower rails to Ensuite & Bathroom  |
| European inspired full wall faced rimless dual flush china toilet suite with 4 star rating and soft close seat to Ensuite WC and Main WC/Powder Room |
| Choice of Chrome, Brushed Gunmetal or Brushed Nickel European inspired mixers throughout   |
| Choice of Chrome, Brushed Gunmetal or Brushed Nickel European inspired double towel rails and toilet roll holders                                    |
| Tile insert floor wastes   |
| Hobless showers to Ensuite and Bathroom  |
| Mitred tiled edges throughout  |
| European inspired 1700mm freestanding bath or inset bath   |

\*7 Star compliance based on the highest-rated orientation and is subject to the Owner's land & design amendments. This excludes the Bickley Valley zone.