

# No compromise on quality

Customers would rather reduce home size first, reports **Maureen Eppen**



**T**wo-toned rendered walls, a white Colorbond roof and garage door, and a big corner window extending into a horizontal band of glazing below the eave give an understated elegance to the front elevation of Blueprint Homes' new Montebello display, at Settlers Hills in Baldivis.

The four-bedroom, two-bathroom home has a familiar layout, slightly altered to reflect feedback in response to previous Blueprint displays and updated to incorporate higher specifications and currently popular decor.

Sales and marketing manager Damien Cestrilli said feedback about the new display home had been very positive, particularly in relation to its functional layout.

"This floor plan has evolved over a few display homes to be representative of positive customer feedback," he said.

"This is reflected in a number of features, including having the laundry located between the garage and the kitchen, and positioning the activity room for a dedicated computer area or children's area within view of the main living zone.

"Having a large, functional

ensuite with similar walk-in robe in the main suite have become absolute and undisputed musts for our clients."

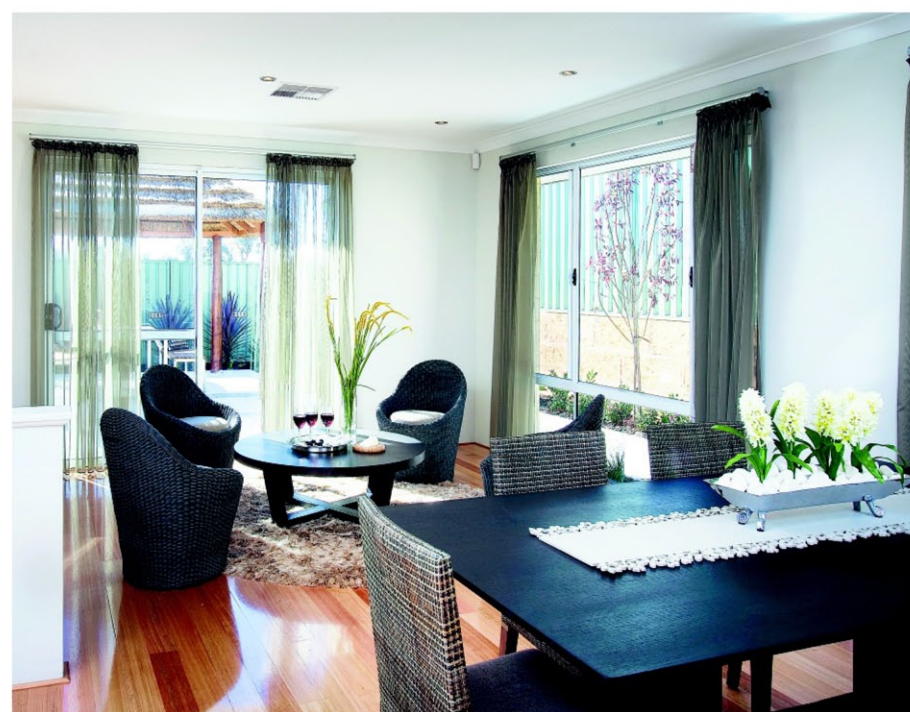
Mr Cestrilli said current economic conditions had not prompted a reduction in quality or specifications for Blueprint Homes, with clients more likely to consider reducing the size of their home rather than compromising on quality.

"Our displays have pivoting shower doors in the ensuite and bathroom, a range hood in the kitchen, doors on robes and an elaborate elevation — all included in the base price."

The main living zone is generously proportioned, with a central family room and the kitchen, meals area and games room down one side.

Squareform benchtops, outside stainless-steel underbench oven and gas hotplates and a sleek steel-and-glass canopy range hood are standard in the kitchen, which also has a big corner pantry, fridge recess, underbench microwave and dishwasher recesses and a capped upstand to screen the sink from the adjacent meals area.

A door near the pantry opens to the laundry, which has a bench-set trough, linen cupboard and access



The kitchen has a big corner pantry, fridge recess, underbench microwave and dishwasher recesses and a capped upstand.

from the double garage. A low capped wall between the family room and games room helps define each space, and a glazed door at the back of the games room opens to the garden.

The theatre room, right of the entry, has also been kept open but is big enough to be enclosed without reducing comfort levels.

Across the entry, the main suite has a big sleeping area, brightened by the staggered corner window of the elevation, plus a deep walk-in robe and open ensuite with outside shower, neat vanity unit and separate toilet.

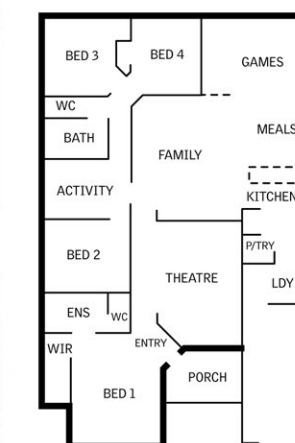
Three double minor bedrooms are in a wing to one side of the family room, each with a single built-in robe. The activity room is also in this wing, plus a bathroom with a layout that works well.



## THE MONTEBELLO

**ADDRESS:** Cape Meander, Baldivis  
**PRICE:** \$163,650  
**BUILDER:** Blueprint Homes  
**PHONE:** 6241 4888

**AT A GLANCE:**  
 Four-bedroom, two-bathroom home with separate theatre room, activity, games room, double garage and front veranda



**Feedback about the new display home had been very positive, particularly in relation to its layout.**