



Blueprint Homes' Platinum Mk2 has a contemporary elevation.

# Builder provides a platinum discount

**GEMMA NISBET**

Homebuyers looking for a spacious home at a reasonable price will be interested to hear about the Platinum Mk2, the latest offering from Blueprint Homes, which is available for a limited time for under \$150,000.

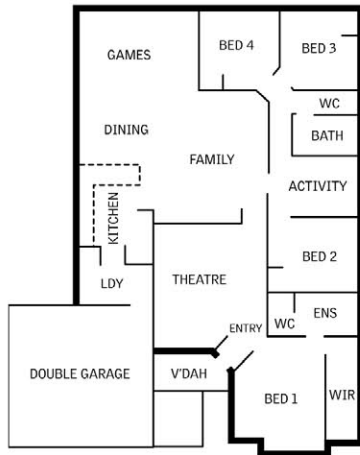
General manager Craig Park said that the design was a modified version of the builder's popular original Platinum design.

"We had a very big response from the market and brought the design back, slightly bigger and with more inclusions," he said. "It's a big house with all the necessary design features that a family would want."

Mr Park said that he expected the Platinum Mk2 would appeal to first-homebuyers and investors alike. "It will provide some real value for people looking for a big home at a small price," he said.

The four-bedroom, two-bathroom home has a contemporary elevation with a feature blade wall, planter box and Colorbond roof.

With 194sqm of living area, it includes a home theatre, open-plan living area with a



kitchen and dining, family and games areas, and separate activity room.

The three minor bedrooms all have built-in robes and are away from the main suite, which has a walk-in robe and ensuite. The toilet is separate.

The Platinum Mk2 costs \$149,950, but the price is only available only for a short time.

For more information, call 6241 4888 or visit [www.blueprinthomes.com.au](http://www.blueprinthomes.com.au).