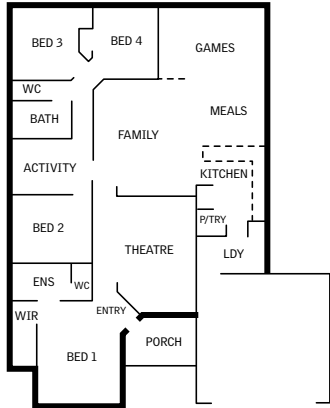


A versatile blueprint



MAUREEN EPPEN

First and second-homebuyers seeking space, value and a practical floor plan are the target markets for Blueprint Homes' Montebello display.



THE MONTEBELLO

ADDRESS: Cape Meander, Baldivis
PRICE: \$161,150
BUILDER: Blueprint Homes
PHONE: 6241 4840

Four-bedroom, two-bathroom home with separate theatre room, activity, games room, double garage and front veranda

With 190sqm of internal floor space, plus a double garage and front veranda, the versatile four-bedroom, two-bathroom home is big enough to meet the evolving needs of families with two or more children but not too big for young couples entering the property market.

The home, at Settlers Hills in Baldivis, can be built for less than \$162,000, which also makes it an appealing option for investors.

Blueprint Homes' general manager Craig Park said the Montebello had been designed for the first and second-homebuyer markets, and had been well received by both groups.

"Customer feedback on the home has been extremely positive," Mr Park said.

In the streamlined front elevation, rendered walls in two-toned grey render complement a white Colorbond roof and garage door. A big corner window on one side of the facade extends horizontally below the eave, and a veranda shelters the central front door from the elements.

The door is set across 45 degrees and opens to an entry space between the main suite and a good-sized, open theatre room.

The main suite has a spacious



The four-bedroom Montebello's open-plan casual zone is designed on a grand scale, including a central family room.

sleeping area, brightened by the feature window of the facade, with a deep walk-in robe and an open ensuite with squareform benchtops on the vanity, enclosed shower and separate toilet.

Beyond the theatre room, the open-plan casual zone is on a grand scale, including a central family room, with the kitchen,

meals area and games room ranged along one side.

The kitchen also has squareform benchtops, broad stainless-steel cooking appliances and a glass and steel canopy range hood as standard. There's a big corner pantry, recesses for a microwave and dishwasher, a capped upstand between the sink and the dining

area, and direct laundry access.

A low capped wall divides the family room and games room and a glazed sliding door at the back of this zone opens to the garden.

Three double minor bedrooms are in a wing to one side of the family room, each with a single built-in robe, plus an activity room and bathroom.