

The modified galley kitchen has parallel rows of cupboards and benches.



A broad veranda shelters the front door, which is set at a 45-degree angle and opens to a compact entry in the Nevona.

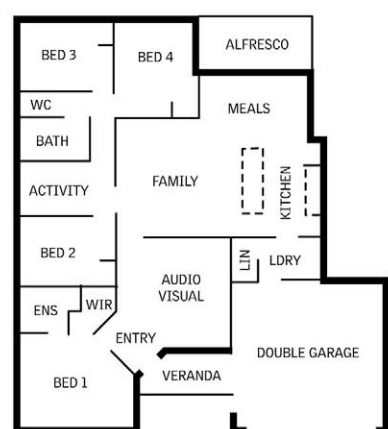
Versatile design offers

a range of possibilities

THE NEVONA

ADDRESS: Ditton Corner, Wellard
PRICE: \$150,700
BUILDER: Blueprint Homes
PHONE: 9419 7223

Four-bedroom, two-bathroom family home with open-plan casual zone, theatre room, activity room, alfresco area, double garage



This neat and functional home makes good use of every square metre of floor space.

Maureen Eppen reports.

Buyers looking for a first home or investment property with a flexible floor plan, contemporary styling and a budget price may find much to interest them in Blueprint Homes' new Nevona display, at Wellard.

The neat and functional four-bedroom, two-bathroom home capitalises on every square metre of floor space.

It has effectively zoned living areas, a private retreat for parents and plenty of room to move for toddlers or teenagers.

It also has a classy, contemporary elevation, combining two-course cream bricks, white Colorbond roof and garage door, and pale

grey render on a freestanding portal.

Blueprint Homes' general manager Craig Park said the Nevona was one of the company's smaller display homes, built to highlight the value people could get for their money.

"The feedback we are getting through our sales rep is that people are responding really positively to this home and recognising that it represents excellent value," Mr Park said.

"The display includes our Signature Specifications, with a long list of features from pivoting doors and 2m-high tiling in the shower stalls to a garage door and the elevation as displayed, with a feature portal.

"Coming back to our original way of providing product to the market, we also offer a Concept price for this home, which is a bit like a blank canvas on which people can add the specific items that they want, according to their priorities and budget.

"This price starts from \$136,950 and offers a great deal of flexibility." A broad veranda shelters the front door, which is set at a 45-degree angle and opens to a compact entry space, separated from the home theatre by a capped half wall.

A door on the left opens to the main suite, which has a spacious

sleeping area, including room for a parents' retreat in the angled space next to one of two windows, plus an L-shaped walk-in robe and neat ensuite with enclosed corner shower and recessed vanity unit.

Beyond the theatre room, a doorway reveals the open-plan casual living zone, with a central family room and the kitchen and meals area on the right, linked to a shallow alfresco area in the back corner, under the main roof.

The modified galley kitchen has parallel rows of cupboards and benches, stainless-steel cooking appliances and a wide pantry.

The island bench holds the sink, has a breakfast bar on its outside edge and effectively separates the cooking area from the family room.

A door at one end of the kitchen opens to the laundry, which has a combination linen and broom cupboard, two-door bench-set trough and direct access to the garage.

Three minor bedrooms are in an L-shaped wing to the side of the family room, near the bathroom and an activity room or study.

Each bedroom has a built-in robe and enough floor space for young or older children.

